

Haysville (USD261)

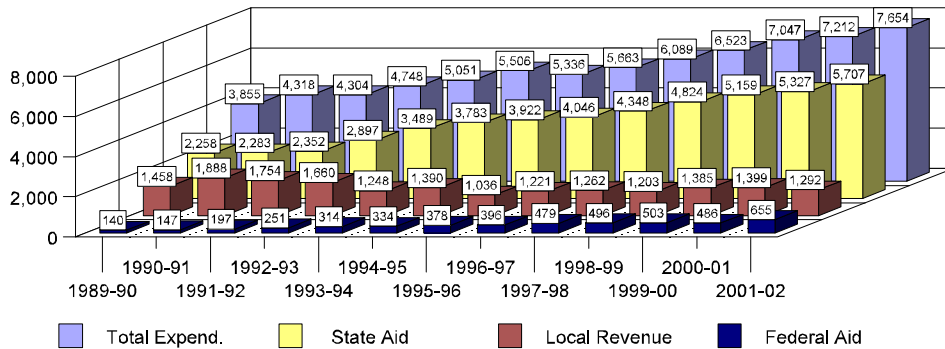
Basic Data

School Year	FTE * Enrollment	State Aid	Federal Aid	Local Revenue	Total Expenditures**
1989-1990	3,281.9	7,409,928	458,225	4,784,097	12,652,250
1990-1991	3,407.3	7,777,275	499,972	6,434,109	14,711,356
1991-1992	3,438.1	8,086,728	678,836	6,030,479	14,796,043
1992-1993	3,483.9	10,094,270	875,160	5,573,826	16,543,256
1993-1994	3,582.9	12,500,321	1,124,650	4,472,103	18,097,074
1994-1995	3,620.3	13,694,874	1,207,381	5,031,183	19,933,438
1995-1996	3,773.1	14,797,019	1,427,229	3,907,246	20,131,494
1996-1997	3,968.4	16,055,363	1,573,185	4,846,310	22,474,858
1997-1998	4,039.3	17,564,393	1,934,805	5,097,944	24,597,142
1998-1999	4,197.5	20,249,540	2,081,055	5,050,951	27,381,546
1999-2000	4,135.4	21,335,359	2,080,545	5,727,335	29,143,239
2000-2001	4,307.3	22,946,712	2,095,294	6,024,294	31,066,300
2001-2002	4,224.8	24,112,027	2,765,198	5,459,664	32,336,889

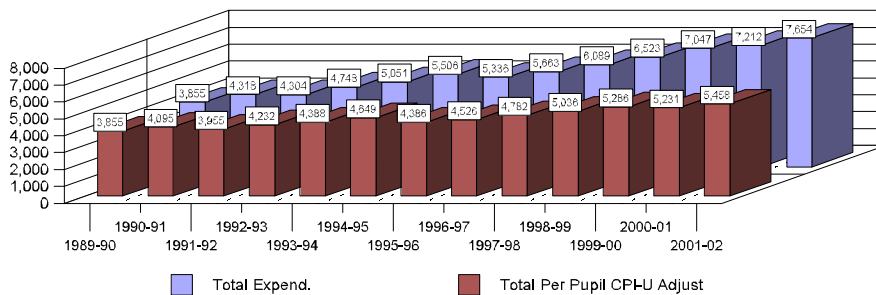
Amount Per Pupil

School Year	State Aid	Federal Aid	Local Revenue	Total Expend.	Total % Inc.	Total Per Pupil CPI-U Adj	Total % Inc.
1989-90	2,258	140	1,458	3,855	n/a	3,855	n/a
1990-91	2,283	147	1,888	4,318	12.0	4,095	6.2
1991-92	2,352	197	1,754	4,304	(0.3)	3,955	(3.4)
1992-93	2,897	251	1,600	4,748	10.3	4,232	7.0
1993-94	3,489	314	1,248	5,051	6.4	4,388	3.7
1994-95	3,783	334	1,390	5,506	9.0	4,649	6.0
1995-96	3,922	378	1,036	5,336	(3.1)	4,386	(5.7)
1996-97	4,046	396	1,221	5,663	6.1	4,526	3.2
1997-98	4,348	479	1,262	6,089	7.5	4,782	5.7
1998-99	4,824	496	1,203	6,523	7.1	5,036	5.3
1999-00	5,159	503	1,385	7,047	8.0	5,286	5.0
2000-01	5,327	486	1,399	7,212	2.3	5,231	(1.0)
2001-02	5,707	655	1,292	7,654	6.1	5,458	4.3

Amount Per Pupil By Source



Total Expenditures & CPI-U Adjusted Amounts Per Pupil



Source of Information—State Department of Education. For explanation, see other side.